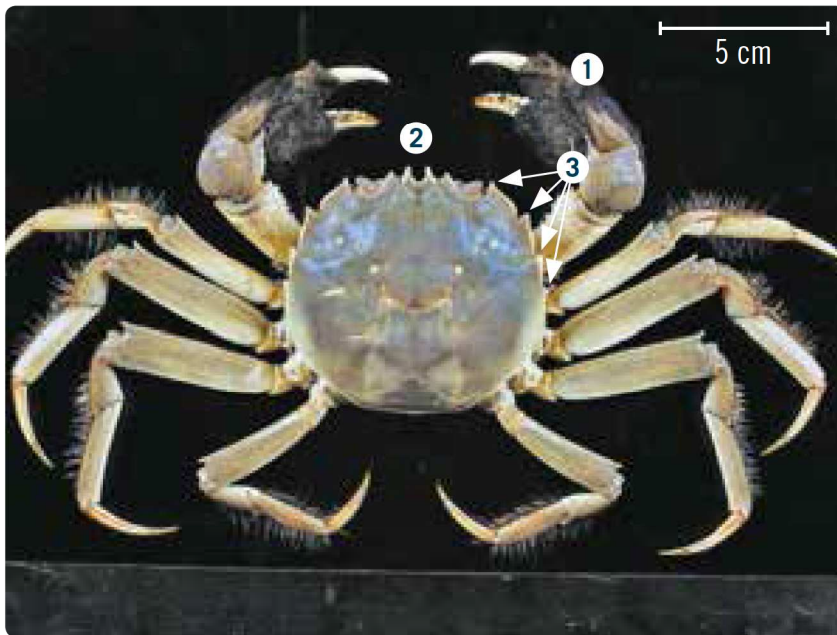


# CHINESE MITTEN CRAB

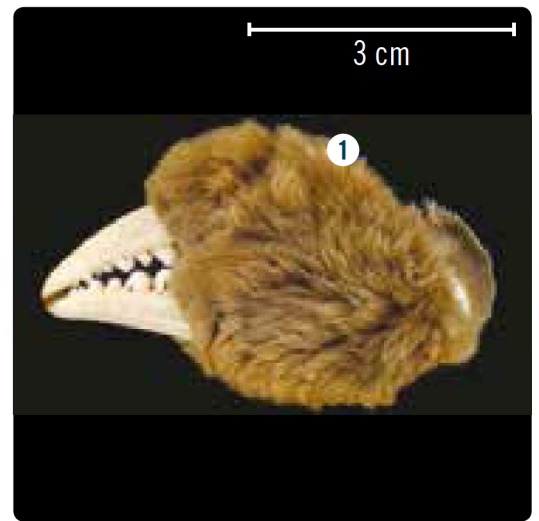
*Eriocheir sinensis*

## Key features

- 1 Hairy “mittens” with white tips on front claws
- 2 Distinctive notches between the eyes
- 3 Four spines on each side of the carapace



- 4 Carapace 0.5-10 cm wide but generally >3 cm
- 5 Light brown to olive-green carapace



## Habitat

- Above high tide to subtidal
- Burrows in sand, mud, silt or clay
- Freshwater, brackish, estuarine and marine waters
- Prefers polluted or nutrient-enriched waters

## Impact

- Can form dense colonies
- Disrupts natural ecological balance
- Accumulates toxins
- Aggressive, highly effective predator
- Displaces native and fisheries species
- Damages fishing nets and catches
- Burrowing weakens and collapses river/estuary banks
- Can carry a liver fluke that harms humans



'If found anywhere in New Zealand, immediately call

**0800 80 99 66**

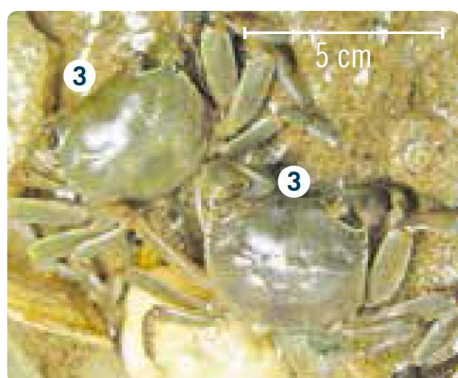
# NATIVE SPECIES THAT LOOK SIMILAR



University of Valencia

How to differentiate *Eriocheir sinensis* from:

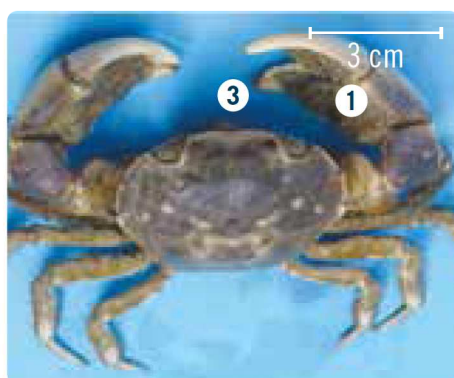
## *Austrohelice crassa* TUNNELLING MUD CRAB



Chris Woods

- 1 *A. crassa* has large, rounded claws – not furry or white-tipped
- 2 *A. crassa* is much smaller – carapace width 4 cm max and distinctly oblong/square-shaped
- 3 *A. crassa* has no spines on the front edge of the carapace

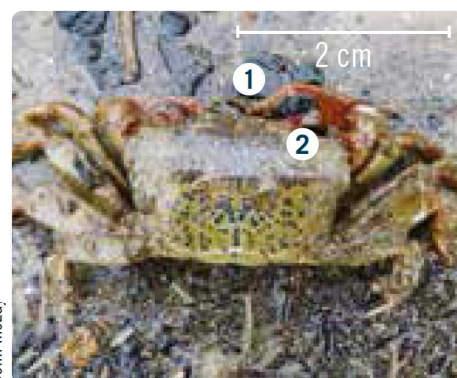
## *Hemigrapsus crenulatus* HAIRY-HANDED CRAB



Colin McLay

- 1 *H. crenulatus* claws are only slightly hairy and the hairs are on the inner side only
- 2 *H. crenulatus* is a much smaller crab – carapace width less than 4 cm
- 3 *H. crenulatus* has no spines on the front edge of the carapace

## *Hemiplax hirtipes* STALK-EYED MUD CRAB



Serena Wilkens



Chris Woods

- 1 *Hemiplax* claws are small, fringed with hairs and with long slender fingers
- 2 *Hemiplax* has eyes on long stalks
- 3 *Hemiplax* is a much smaller crab – carapace width less than 3 cm